

# Premium Banner Stand Accessories

## Kit 01: AKIT-151L

## Kit 02: AKIT-1S

## Kit 03: AKIT-1L

Premium Banner Stand Accessories are a unique addition to any premium banner stand. The tabletop and literature pocket instantly turn any premium stand into a full display solution with space to show products and hold product information literature.



kit 01  
shown on  
an Advance  
(ADV-800-S)  
banner stand



kit 02  
shown on  
an Barracuda  
(BCD-800-S)  
banner stand



kit 03  
shown on  
an Imagine  
(IMG-800-S)  
banner stand

## features and benefits:

- Available for single or double sided premium banner stands only
- Kit 01 includes: 2 PH800 uprights, one black rectangle shelf and one LN112-2 literature pocket with attachment hardware
- Kit 02 includes: 1 PH800 upright, one black rectangle shelf and attachment hardware

- Kit 03 includes: 1 PH800 upright, one LN112-2 literature pocket and attachment hardware
- Ships in one corrugated box
- Limited lifetime warranty against manufacturer defects

## dimensions:

### Shipping for kit 01: (AKIT-151L)

36"l x 12"w x 6"d  
914mm(l) x 305mm(w) x 152mm(d)

### Shipping for kit 02: (AKIT-1S)

36"l x 12"w x 6"d  
914mm(l) x 305mm(w) x 152mm(d)

### Shipping for kit 03: (AKIT-1L)

36"l x 12"w x 6"d  
914mm(l) x 305mm(w) x 152mm(d)

### Shipping weight for kit 01: (AKIT-151L)

9 lbs/ 4 kg

### Shipping weight for kit 02: (AKIT-1S)

9 lbs/ 4 kg

### Shipping weight for kit 03: (AKIT-1L)

7 lbs/ 3 kg

## additional information:

- Each literature pocket (LN112-2) can hold up to 5 lbs of literature
- Each tabletop can hold up to 5 lbs
- PH size is 800mm high standard
- Tabletop is 8.66" l x 8.66" w x .591" d
- Notes:
- Recommended one accessory per PH due to weight restrictions

- Banner stand should be setup before attaching table or literature pocket accessory

- Compatible with **NEW** premium banner stands only

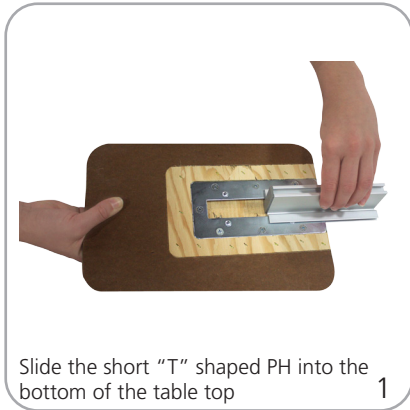
Imagine: IMG-800-S  
Advance: ADV-800-S  
Barracuda: BCD-800-S/BCD-800-B  
Excalibur: EXC-800-S/EXC-800-B



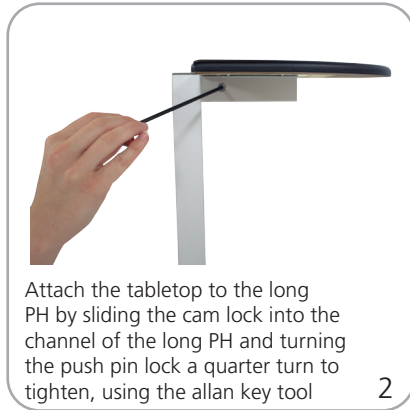
LN112-2  
Literature Pocket

We are continually improving and modifying our product range and reserve the right to vary the specifications without prior notice. All dimensions and weights quoted are approximate and we accept no responsibility for variance. E&OE. See Graphic Templates for graphic bleed specifications.

## Tabletop Set-up



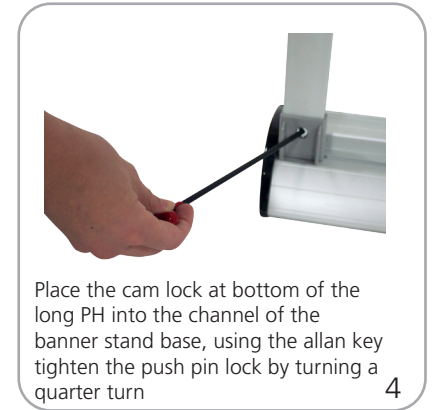
Slide the short "T" shaped PH into the bottom of the table top 1



Attach the tabletop to the long PH by sliding the cam lock into the channel of the long PH and turning the push pin lock a quarter turn to tighten, using the allen key tool 2

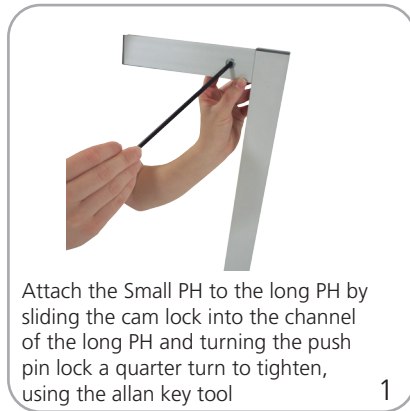


Slide the banner stand channel bracket over the long PH until the push pin lock and hole are aligned 3



Place the cam lock at bottom of the long PH into the channel of the banner stand base, using the allen key tighten the push pin lock by turning a quarter turn 4

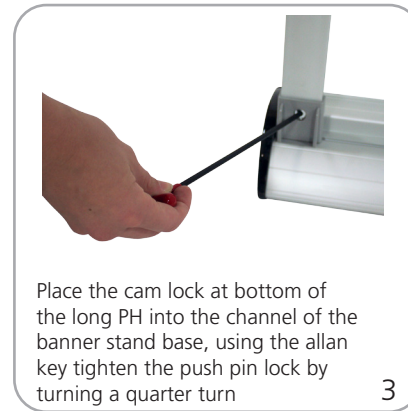
## Literature Pocket Set-up



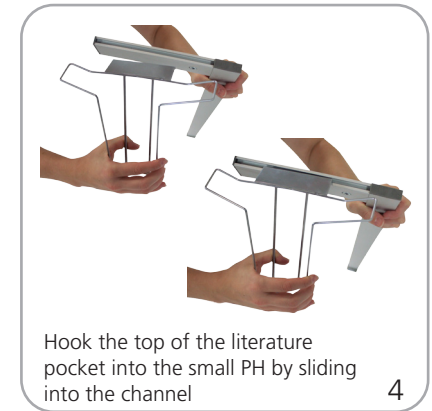
Attach the Small PH to the long PH by sliding the cam lock into the channel of the long PH and turning the push pin lock a quarter turn to tighten, using the allen key tool 1



Slide the banner stand channel bracket over the long PH until the push pin lock and hole are aligned 2



Place the cam lock at bottom of the long PH into the channel of the banner stand base, using the allen key tighten the push pin lock by turning a quarter turn 3



Hook the top of the literature pocket into the small PH by sliding into the channel 4